



HOLY TRINITY
Ashby de la Zouch

Annual Report
&
Accounts

For the 2017 APCM

Sunday, April **30th** at 4:00 p.m.

Covering the period
Jan.-Dec. 2016

CONTENTS	Page
Incumbent's Report	1
Ashby and Breedon Team	2
HTC and PALS	3
Men's Bible Study	3
Boys on Fire	3
Churchwardens' Report	4
Electoral Roll	7
Parish Administration	8
Mothers' Union	9
Communications	10
Sunday Evening Bible Study	11
PCC Secretary's Report	12
God Rocks Café	15
Trinity Fellowship	16
Coffee on Thursdays	16
Refresh	17
T.L.P. (Trinity Link People)	17
Tiny Tots	19
Musical Worship	20
Deanery Synod	21
Ministry to Lyndhurst Lodge	23
Ministry to Loudoun House	23
Ashby Foodbank	24
Connect	26
Ride and Stride	26
Christian Aid	27
CAP Job Club	28
CAP Fundraising/Communication	29
Trinity Walkers	30
The Children's Society	31
Mission to Seafarers	32
Planned Giving	34
Church Accounts Title Page & Index	35
Church Accounts Details	I - II

VICAR'S REPORT

God the Father has blessed us in many ways during 2016. We have benefitted richly from the ministry of our retired clergy, curate and readers, as well as the leadership of our Team Rector Mary.

We have been able to welcome new people to our church family and we have seen new initiatives, including Explore Together, which offered activities during All Age Services.

There is much to be encouraged about as you read this report and see much of what God is doing amongst us. In particular, I want to draw your attention to the work of Ashby foodbank. This is a church led community venture and the work is made possible by contributions of many people from other churches and beyond the church. Under Noreen Mewies leadership, the Ashby foodbank was warmly commended when audited by the Trussell Trust and has increased the number of meals given out from 6,000 in its first year to over 14,000 in 2016/2017.

Ken Garner, Diana Saunders and Lyn Thomas have served us as Wardens and Treasurer. Together they have borne the weight of responsibility for much of the 'out-of-sight' life of our church. They stayed on in their roles in anticipation of Brian Robertson's retirement, they then stayed on during the interregnum and then again to allow me to facilitate my sabbatical. Meeting together as your Standing Committee and dealing with the details of running our church, bringing proposals to the PCC (Parochial Church Council), and keeping me on track, with encouragement and corrections, they have been truly wonderful.

I am so grateful to God for their service, kindness, wisdom and commitment. As we now come to the time when they are all standing down, please do pray for God's provision as we look to elect two new Church Wardens and, as a PCC, to appoint a new Church Treasurer. Please pray that God would lead and guide and pour out his blessings on Ken, Diana and Lyn as they step down from these responsible roles and find a new rhythm to life in our church family.

In 2016 we have lost two of our longest standing church members. Next door neighbours for many years, both Alf Parry and Betty Drabble died while I was on sabbatical. When I arrived at Holy Trinity in 2005, I learnt that I was Alf's ninth vicar at Holy Trinity. Both Alf and Betty have played full and varied roles in the life of our church and it is with gratitude that we remember them.

My sabbatical formed a large part of my 2016 and I want to express my gratitude to you all for that gift of three months away from my usual duties. Between church visits, time in Canada, Army Cadet Annual Camp, writing thousands of words and various family adventures, I found myself deeply moved by God's grace and the generosity of his people. Thank you for your prayers and support.

An Annual Report is mostly about looking back. God is at work amongst us in so many ways and there is much to be grateful for. Looking ahead it is to him that we look. He is our hope and our strength. He has prepared good works for us to do. Let us look to him and seek his kingdom that we may see his will being done here.

With love in Christ

Tim

ASHBY AND BREEDON TEAM

2016 has been an amazing year for the development of the Ashby and Breedon Team. Rev'd Canon Mary Gregory joined us towards the end of 2015, and after a period of 'long listening', we have rapidly developed in how we see ourselves as a Team Ministry.

Team Talk 2016

Team Talk 2016 provided an opportunity for us to gather over five Tuesday evenings from across the seven churches of the Ashby and Breedon Team. Looking at a range of issues including our service pattern and a potential new name for our team, there was an increasingly joyful atmosphere as we got to know one another and developed our shared life.

Service pattern

Starting in September 2016, we entered into a new service pattern for our Sunday worship. Moving from eleven start times to just four (8:30 a.m., 10:30 a.m., 3:30 p.m. and 6:00 p.m.), the new pattern provides greater clarity and enables the clergy and readers to both finish and arrive at services without hurry. The trial is due to finish in April 2017 with any further changes being implemented from May.

John Dawson retirement

One of the big events in our team's life in 2016 was the retirement of Rev'd John Dawson from the role of Team Vicar, overseeing Breedon (with Staunton Harold), Worthington and Isley Walton. There was a lovely garden party organised by those churches as well as a farewell and prayers at one of our fifth Sunday Team Services.

9:00 am -> 8:30 am

The most notable impact of the trial service pattern, for those who attend the early morning service, has been the move from a 9:00 a.m. start time to 8:30 a.m. While this has resulted in a slight drop off in numbers at this early service, we have worked hard to understand and minimise the impact of this change, which allows time between the services for clergy and setting up our Worship Group's equipment.

Worthington

As part of my role as Team Vicar in the Ashby and Breedon Team I have systematically taken services in one of the churches that John oversaw on the fourth Sunday of each month (since July 2009). Often, this has meant I only visited a particular church every two of three months. As part of the trial service pattern I agreed with Mary Gregory that I would (with help from people at Trinity) arrange cover for the services at S. Matthew's, Worthington. This has allowed us to get to know each other in new ways and to seek God's purposes for mission and worship in that parish.

Team Wardens, Team Service Leaders

During 2016 we have been able to develop our team in various directions through meetings of different groups. These have included our Team Service Leaders (Clergy, Readers and Musicians) and our Team Wardens. Mary's leadership has facilitated a growing mutual support, communication and encouragement.

Looking forward to completion of Heritage project

Within Ashby we have also drawn closer to our sister church, S. Helen's during 2016 and it is with anticipation that all the ministers of the town are looking forward to the completion of the S. Helen's Heritage project. This large undertaking will provide a heritage visitor centre where many volunteers from across the churches will be able to welcome those who will come to see the moving and varied history of worship in our town.

Conclusion

With Mary Gregory as our Team Rector we are developing our life as a team in many directions. We are getting to know each other and looking for God's purposes for the years ahead. Please continue to pray for our Team and those who serve within it.

Tim Phillips, Team Vicar in the Ashby and Breedon Team

HTC (HOLY TRINITY CLERGY) AND PALS (PREACHERS AND LEADERS OF SERVICES)

The Holy Trinity Clergy (Tim Phillips, Adele Adshead, Paul Harris and Stephen Brook) now meet fortnightly and every third meeting we welcome our licensed Readers, Steve Clowes and Jean Holt. We have four purposes for meeting together:

1. Adele's Training. Together we support Adele in her curacy and provide a forum where Adele can benefit from insights of our clergy and readers.
2. Pastoral Care. Often congregation members (and others) speak to us. Where appropriate, these matters are shared so that we can support each other and pray for those with various needs.
3. How we lead services. We are able to review how things are going with the services we lead.
4. Developments in the Ashby and Breedon Team. As the team develops it is important that our clergy and readers are informed and able to offer their advice.

Tim Phillips

MEN'S BIBLE STUDY

Generally ranging for four to six men in 2016, Men's Bible Study meets at I Trinity Close at 6:00 a.m. on Thursday mornings. We meet over a cup of coffee and often there are times of silence. Again and again we leave sensing that God has spoken to us. During 2016 we've had Tony Watson, Steve Clowes, Vernon Bayliss as our most regular members with others joining us when they are able.

Tim Phillips

BOYS ON FIRE

Boys on Fire (BoF) continues to meet weekly during term-time. Starting at 5:30 p.m. on Thursdays, our key age range is KS2 (Key Stage Two, roughly 7-11 years), with many helpers being older. Phil Taber and myself lead the group, ably supported by our KS3 assistants.

Each evening includes plenty of games in the church building. Games such as, Capture the Flag, Hide and Seek Tigg, 'Red Board – Fair Trade'. The origins of this last game will soon be lost in the mists of time, but it is something like 'Port and Starboard'.

Each evening the boys dine on carrot batons and apple slices, followed by a packet of crisps and a hotdog in a baguette. After the meal there is a story, normally told by Phil Taber, either from the bible or more recent events, drawing out something of God's character. The meal is a key part of the evening where the boys talk and listen to each other. BoF has now completed it's ninth year.

Tim Phillips

CHURCHWARDENS' REPORT

First of all, a big thank you to the many people who have served Trinity during this year in so many ways.

We are particularly grateful to Philip Craner, our Verger and Hall Caretaker, who has continued to complete his duties to his usual high standard and to Emma Harris who has, yet again, excelled as our Parish Office Administrator (a job title that does not do justice to the wide range of tasks and responsibilities she carries out). Lyn Thomas wonderfully served yet again as our Treasurer. Her service and commitment must not go unrecognised, supported by her small team counting and banking monies, claiming gift aid, etc.

As the PCC of Holy Trinity is a registered charity (Reg No 1131178), we are required to submit annual reports to the Charity Commission. Copies of those reports, which include the annual financial report, can be viewed by accessing the Charity Commission website.

DEPUTY CHURCHWARDENS

We are blessed with a wonderful team of Deputy Churchwardens (Frank Bedford, Janet Onions, Steve Porter and Jean Harrison) who have served us throughout the year in specific roles.

STANDING COMMITTEE

As the Standing Committee we have met with Tim and Lyn Thomas (our Church Treasurer) on a monthly basis to discuss issues that may have arisen and to prepare for PCC meetings. Jean J Harrison joined the Standing Committee in December 2016, as PCC Secretary, to ensure continuity in the coming months as changes occur in the committee membership.

CHURCH FAMILY & GROWTH

Our church family comes from a wide range of Christian backgrounds, some worshipping at their parish church, others drawn by its particular spirituality, but all sharing a sense of Trinity being their spiritual home and a place of nurture. Our church members are comfortable with the present styles of worship, value its bible-based preaching and consider the friendliness and sense of "family" as one of Trinity's most significant and valuable characteristics.

We have continued to see growth in many areas of our church life, which is covered in detail within the various sections of this Annual Report. Every year we are required to provide certain statistical information to the Diocese relating to church attendance and our worshipping community, and the following brief extracts may be of interest.

Year	Typical Sunday Attendance		Electoral Roll	Worshipping Community			
	Adults	Children		0-10 years	11-17 years	18-69 years	70+ years
2016	119	34	202	40	15	152	52
2015	118	32	197	36	16	148	50
2014	118	32	175	30	14	162	41
2013	110	37	166	30	13	140	28

Our worshipping community numbers about 260.

Attendance at the following additional services in 2016 was as follows:

- **Easter:** Total number attending worship: 156 with 98 communicants
- **Christmas:** Total number attending Christmas Eve or Christmas Day: 529
- **Special Services** during **Advent** for the congregation and local community: 402
- **Special Services** during **Advent** for schools and other organisations: 2,180

WORSHIP

Sunday Services

The pattern of services held at Trinity changed in September 2016 for a trial period of six months as a consequence of the changes in the Ashby & Breedon Team arising from the retirement of the Rev'd John Dawson. The changes were introduced in order that the resultant pattern of services is sustainable with the two full-time ministers and Readers in the team.

The 9:00 a.m. (currently 8:30 a.m.) and evening worship are in a “traditional” Anglican style led by organ and/or piano accompaniment. The 10:30 a.m. worship is in a modern style led by an amplified band, occasionally with organ at the start and end of the service.

GOD ROCKS CAFÉ (JUNIOR CHURCH)

Many thanks go to our team of leaders who have been assisted by helpers from the congregation and have continued to bring our young church members to know Jesus, and learn that you can have fun being a Christian. The members of God Rocks Café once again participated in the Nativity Service and thanks go to them and our Curate, Adele Adshead, who led the team for that event.

CHURCH POLICIES

Holy Trinity's main Church policies have been reviewed by the PCC, to ensure they are up to date and truly reflect what is actually happening. A list of policies can be found on the church website.

GENERAL INFORMATION

The pages of the Memorial Book were turned weekly, and additions made as appropriate; any such requests to be made via the Churchwardens or Tim.

The insurance policy, which provides cover to Holy Trinity in respect of employer's and public liability, church buildings and contents, was renewed and displayed in the Vestry.

Maintenance of the churchyard falls on the Town Council who, since 1st January 2012, has used its own grounds-keeping staff.

The church Terrier/Log Book is updated in an ongoing process, ensuring that the records are up-to-date.

Diana Saunders has continued to oversee communications within, and outside, the church. We continue to welcome contributions to the church magazine. Our thanks go to our Vicar and Emma Harris for the production of the magazine, and to Graham Barge for collation and production of this Annual Report which sets out Trinity's mission in Ashby and elsewhere (and other material printed over the year).

Copies of the church magazine are freely available to visitors of the church.

Our thanks go to Emma Harris who has continued to serve as parish administrator. Emma maintains the church diary (also available on our church website trinityclose.net), updates the church pew leaflets on a weekly basis, and runs the parish office on four mornings each week (Monday to Thursday) during school term times. Emma continued to serve S. Helen's in the same role until the end of April 2016. However, Emma has since taken over certain administrative duties for Worthington.

Changes in the law relating to workplace pensions required Trinity to introduce a pension scheme in July for our employees.

CHURCH BUILDING MAINTENANCE/IMPROVEMENT

Many thanks go to the people involved in carrying out various small repairs within the church building. The church has suffered from water ingress at various points through the roof for some time. New proposals have been drawn up to address the problems posed. However, further funds are required before the work can be carried out.

FUND RAISING

We have been very fortunate in having a committed team of fund raisers.

A Christmas Tree Festival was held to raise funds for the roof repair programme and raised £3,500. Many thanks go to the local businesses, community groups and families/individuals who sponsored a tree.

Carole Timms continued to lead a small team seeking grants towards the roof programme. However, an application to the Emergency Roof Repairs fund was unsuccessful.

SAFEGUARDING OF CHILDREN, YOUNG PEOPLE AND VULNERABLE ADULTS

Trinity has Safeguarding Policies in place for children and young people and vulnerable adults. All leaders are required to hold a satisfactory Disclosure and Barring Scheme certificate. All leaders and volunteers are required to undergo safeguarding training provided in-house and/or by the Diocese. Copies of the Safeguarding Policies and other relevant information can be found on the church notice boards.

CHURCH HALL

Our thanks go to Jean Harrison for liaising with Church Hall users and to Emma Harris for managing bookings. The hall is run as a stand-alone facility and as such is a self-funding community asset. The hall continues to be used on a regular basis by Trinity Play Group (who are not part of Trinity Church), Badminton, Army Cadets, Thursday Ladies (gentle exercise) and Dancing Classes.

USE OF CHURCH BUILDING

We actively encourage the use of the church as a community building, and the church has been used for many services/concerts throughout the year, including:

- Remembrance Concert
- Ashby Concert Band
- School Harvest services
- School carol concerts

as well as our regular users including Tiny Tots, Mothers' Union, Trinity Fellowship, Pastorate Group, Boys on Fire, Soul Café and CAP Job Club.

The charges for use (other than worship) of the church by the various organisations who use the building are intended to recoup the costs incurred, for example heating, lighting, vergers' time, etc. No charges are levied for worship events and reduced charges for organisations raising funds for charitable use (other than their own). The concerts are well attended and provide links between the church and the town community and also support a range of charities.

ASHBY & BREEDON TEAM

Since the appointment of Rev'd Canon Mary Gregory as Team Rector, we have continued to see the team churches grow closer together. In September, Rev'd John Dawson retired from his post in the team as a full time non-stipendiary minister. We have been very blessed by John's service in Breedon and Worthington for so many years and we are so grateful for Tim and Mary's unstinting service to our church communities.

FINALLY

This will be our last contribution as church wardens to the Annual Report as we are both standing down at the APCM to be held in April 2017. We have seen many challenges during our respective periods of service, the most significant being the appointment of a new Team Rector. We are very grateful to you all for your support and encouragement during our service and, in turn, pledge our support to our successors. It has been a privilege for us to serve as wardens at Trinity.

Ken Garner & Diana Saunders
Church Wardens

~~~~~

## **ELECTORAL ROLL**

The church's Electoral Roll is a register of its voting members. Electoral rolls provide an indication of the membership of the Church.

At the 2016 Annual General meeting it was reported that we had 202 names on the electoral roll.

If you would like to know more or would like to apply to be on our Electoral Roll please contact the Electoral Roll Officer:-

Janet Onions  
5 Canterbury Drive, Ashby de la Zouch, LE65 2QQ Tel:- 01530 454153  
[janet.onions@gmail.com](mailto:janet.onions@gmail.com)

### **THANK YOU**

A big thank you goes to all the people who contributed to this report.

If anybody has any suggestions on how to improve next year's report  
please drop a note to me.

Thanks.

*Graham Barge*

[grahambarge@btopenworld.com](mailto:grahambarge@btopenworld.com)

## PARISH ADMINISTRATION

The Church Office encounters a number of varied bookings and requests for church use which focus particularly on weddings, baptisms and funerals which are also known as 'Occasional Offices'.

The weekly activities for the office administrator include:-

- Communication with congregation (ChurchInsight / postal / email / telephone)
- Dealing with a wide variety of queries related to Holy Trinity services, the booking of baptisms, funerals, weddings and concerts
- Entry into registers and production of copy wedding certificates
- Invoicing for church hire, weddings, funerals
- Church Hall Hire
- Grant applications for church roof, organ and church hall
- Production of weekly pewsheets
- Preparation of items for the Trinity Life Magazine
- Liaison with Holy Trinity volunteers for additional services
- Ordering of supplies
- Calendar administration
- Updating the ChurchInsight system
- Ensuring value for money on gas, electricity, phone, broadband and fire equipment servicing
- Rota generation
- Assisting with recruitment
- Policy generation
- Organisation and calculation of payments for retired ministers for funerals and weddings
- Occasional media (cards, invitations) for Refresh and Hope & Remembrance services.

In April 2016 I relinquished the provision of administrative support to S. Helen's church to my new colleague Jill Chapman. I have been enjoying working with Jill and having a team colleague to discuss church administrative matters. I have also forged links with Gillian Roberts (Administrator) of Ashby Baptist church. We meet on a monthly basis to coach and mentor each other. We are both members of UCAN (United Church Administrator Network). We plan to attend an Administrative training day in Birmingham on 4th May to keep ourselves informed with developments. Following the retirement of John Dawson, I am now assisting Rev'd Tim Phillips with administration of baptisms, weddings and funerals at S. Matthew's Worthington. This has led to additional hours being worked (funded by S. Matthew's) in order to manage the increase in workload. I am enjoying getting to know our Wardens at S. Matthew's and developing relationships with others from the Ashby and Breedon team of churches.

Other notable changes to the Administrator role include having taken on the Church Hall management bookings from Phyl Hambleton who retired after over 20 years of sterling service in the role. It is a very busy hall with regular hirers booking most available days and weeks of the calendar year. I have been involved in drafting new terms and conditions in conjunction with the Hall Management team for our Hall hirers to take effect from 1st April 2017.

I am also now lending my administrative skills to making grant applications to boost finances for improvements to the church roof, organ and church hall.

*Emma Harris*  
*Holy Trinity Administrator*

The AGM in January 2016 was well attended and Rachael Bull was elected as branch leader, Noreen Mewies as secretary and Pat Goldsmith as treasurer. It was agreed that we would continue without a committee and decisions would be made during open branch/planning meetings.

Speakers during 2016 included: -

- PC Mark Arjoo – My work in the community
- Rev'd Catherine Booton – Meditation for Lent
- Margaret Rouse – Mapping the future
- Fire Safety Community Educator – Safety in the home
- Margaret Weston – Mothers' Union memories

Deanery Prayer meetings continue to be held quarterly; intercessing for our world, organisation, branches, communities and individuals in the name of Jesus. We thank Margaret Weston for organising the prayers from Holy Trinity for these.

This year Mothers' Union celebrated 140 years and had a day of celebrations at Whetstone Farm in Leicestershire. Rachael Bull and Jocelyn Harris really enjoyed their day and met up with some new and old friends.

The Teddy Bears' Picnic in July was held on the front lawn outside Holy Trinity. We had lovely weather and it was attended by eleven families. We all enjoyed our picnics with great company.

Instead of holding the Deanery Advent Tea in December, we hosted an afternoon tea in July for all the members of the deanery. It was a huge success and we were blessed by an outstanding performance from 'Parking Space'; everyone had a lovely time.

To mark the 140 years' celebration of Mothers' Union, Margaret Rouse, our Diocesan President, conducted a 'Presidents Prayer Pilgrimage' where she visited each branch in the diocese and prayed with them for Mothers' Union, our branches and the communities where we live and serve. We were encouraged by her and have been able to keep the service sheet, cross and ribbons used during the prayers. They were used at a branch meeting later in the year for those who were unable to attend the pilgrimage meeting.

In November, our deanery led the Cathedral Prayers at Leicester Cathedral and Rachael Bull represented Holy Trinity by taking part in the service. It was based on 'Saints' as it was around the time of All Saints Day and was well received by the members who attended.

Our branch sponsored a tree at Trinity's Christmas Tree Festival. Thank you to Jennifer Swainston, Jocelyn Harris, Ann Benfield and Pat Goldsmith for doing such a wonderful job of decorating our tree. It looked amazing!

We have a great programme of speakers and lots of events in 2017 to look forward to.

We meet on the first Wednesday of the month (except in August) in Holy Trinity Church at 1:30 p.m.

*Rachael Bull*  
Holy Trinity Mothers' Union Branch Leader

## COMMUNICATIONS

At Holy Trinity, we all work as a team and we aim collaboratively to communicate clearly to everyone all that is happening in and throughout our church. Our intention is to provide the level of information people feel they need, whether they are internet-able or not. We rely on feedback to improve our communication network - so please do talk to us.

### Church Office

The Church Office is the main hub of our communications network. Emma Harris has been in the church office (based in the vicarage) from 09:30 - 11:30 a.m. Monday to Thursday, taking telephone messages, carrying out general administration for the church and managing the church diary. During church office hours Emma can be reached on 01530 412339. We appreciate her efficiency and hard work. She is an excellent communicator!

### Church Calendar

The church calendar shows events taking place in the church building. Other groups taking place can be shown in the diary if requested. The diary is live and can be accessed at [trinityashby.net/cal](http://trinityashby.net/cal).

### Church magazine

Copies of our monthly magazine, Trinity Life, continue to be available and can be delivered at a cost of £5 per year. Copies of the magazine are freely available for visitors in the church porch and at the back of church. Production of the magazine relies on a dedicated team to whom we are all grateful. We particularly thank all those who deliver the magazines to people in the parish and who, at the same time, provide a link with members of our church community. If you would like to view or download a current or back copy, you can find them at [trinityashby.net/mag](http://trinityashby.net/mag), but you will need to login.

### Pew Sheets

These are available weekly at all Sunday services. There has been little change in 2016, except for a gradual increase in detail. Large print pew sheets are available for those who need them.

### Prayer Chain

This is in regular use and continues to be a valuable communications tool. Requests for inclusion in the prayer chain need to be made to Emma Harris, Adele Adshead or Tim Phillips, through the Church Office on 01530 412339 or by email to [prayer@trinityashby.net](mailto:prayer@trinityashby.net)

### Information about Leicester Diocese

'In Shape' magazines, which contain information and articles from the Leicester Diocese, are freely available at the back of church. In Shape is published four times a Year i.e. Winter - December, Spring - March, Summer - June and Autumn - September. More information is available at: [leicester.anglican.org/in-shape-magazine](http://leicester.anglican.org/in-shape-magazine)

### Notices in Church

Notices are now given prior to the start or before the last hymn at the 10:30 a.m. service each Sunday. Please remember that there are usually newcomers and guests in church. If you give a notice, begin by introducing yourself and say which group in church you are representing. Please also start with the subject of the notice (e.g. quiz night or opportunity to volunteer etc.)



Verbal notices are important and you may need to give the notice on more than one Sunday. To get your notice into the weekly pew sheet, which is particularly important if it is to reach those attending the 8:30 a.m. or 6:00 p.m. services, please contact Emma by email in the church office in plenty of time. Your notice is much more likely to be read if given several times, ideally three weeks, two weeks and one week before the event in question. We ask that, except in special circumstances, written notices are under forty words.

These notices are now sent out to most people in the church family by email, arriving at 7:00 a.m. on Saturday mornings.

We wish to thank members of our church for their help in gradually increasing the clarity of communication. Do please contact me if you feel that there are further improvements that we should consider.

### **Church Insight**

Our Church website gradually improves, with more information about our groups on the Groups page. Our church notice boards are now organised using the same structure.

Using the ChurchInsight system we are also able to provide

- Individual user accounts for those who want to update their own information
- Mailing lists for emails and letters
- Easily accessible Rotas for all our groups managed online
- Electronic reminders for those on rota who want them
- An integrated calendar linking groups, their web pages, and members
- A website that can be maintained group by group, using a web-browser from any computer.

We would now like to develop our online address book so that it helps communications within the church family. You won't be included in this, without your explicit permission, so please look out for the notices that will be asking you to give your permission to have your email, phone number or 'all' your details included for church members to see.

*Diana Saunders*

Church Warden with Responsibility for Communications.

~~~~~

SUNDAY EVENING BIBLE STUDY

This is an informal group which, in the past, has got together from time to time to hear video or audio courses on the Life of Jesus studied from a Jewish perspective. This course from Ariel Ministries aims to place Jesus and his teaching firmly within the political, cultural and religious context of first century Israel. Many have found that this has brought Jesus and his world to life for them and has deepened their faith.

The latest group, which consists of a core of seven people, meets at 5 Canterbury Drive. On completion of the Life of Jesus, group members were keen to carry on meeting so we are studying the Book of Daniel using an audio course from the same organisation. As is usual, the discussion time after completion of the audio session is often more interesting and more useful in our growth in commitment and love for our Lord than the teaching material itself. I think all of us have grown closer to each other and to God through our time together.

Bob Onions

PCC SECRETARY'S REPORT

A brief report of the proceedings of the Parochial Church Council
for the period January to December 2016

Meetings: Meetings were held in January, March, May, July, September and November.

Council Membership: The PCC had a total of 17 members before the APCM on 24th April 2016 and 21 members following.

Ex-Officio Members:

Team Vicar:	Rev'd Tim Phillips
Readers:	Steve Clowes and Jean Holt
Churchwardens:	Ken Garner, Diana Saunders and Iris Holt (Churchwarden Emerita)
Treasurer:	Lyn Thomas
Deanery Synod Representatives:	Frank Bedford, Iris Holt and Carole Timms

Other Members:

Jean M Harrison, Noreen Mewies, Bob Onions, Steve Porter, Ian Rudin,
Janice Westland, Roy Westland, Gemma Barber, Mike Kelly, Paul Marcus-Smith,
Ian Rudin and Jean J Harrison

Members standing down at the 2016 APCM - None

Members elected/re-elected at the 2016 APCM

Gemma Barber, Mike Kelly, Bob Onions, Ian Rudin, Janice Westland and Paul Marcus-Smith

Standing Committee

A small group of members who can make decisions between PCC meetings. Members are:
Team Vicar – Rev'd Tim Phillips, Treasurer – Lyn Thomas and Churchwardens – Ken Garner
and Diana Saunders.

Typical Agenda Items

Welcome and Prayer
Apologies for absence
Review of Minutes of previous meeting
Matters arising from those minutes
Specific items for information or discussion
Reports: Clergy, Treasurer's, Churchwardens' and Deanery Synod
A.O.B. and Notices

Key Issues and Decisions

January:

Safeguarding Training for leaders of groups involving children arranged for 31st January,
prepared for and led by the Churchwardens.
Two new policies proposed and accepted, namely:-

'PCC Policy for emails sent from the ChurchInsight Church Administration System' and 'PCC email Policy for PCC Business'.

Agreement reached to submit a 'Listed Places of Worship Special Roof Grant' application. Arrangements confirmed for Holy Trinity's representation at the Methodist Church's morning service on 17th January, during the Week of Prayer for Christian Unity.

Members were in favour of adopting a policy for giving bibles to children at the start of Year 3 (juniors) and Year 7 (secondary) and for a children's bible to be presented to all of our Baptism and Thanksgiving families.

An outline was presented of the series of planned, Tuesday evening meetings – 'Team Talk 2016' - to be held at four different venues in the Ashby & Breedon team.

The Treasurer's recommendation that a return to the 'Receipts and Payments' system of accounting was accepted.

March:

Rachael Bull (as Guest) attended the meeting to present her proposal for supporting Year 6 primary school pupils and their parents, as they prepare to move to secondary school.

Members warmly welcomed her proposal.

Members agreed the need to devise a procedure for the management and storage of official church correspondence and records.

An application to be made to the Ashby Educational Trust for a grant towards a projector for God Rocks Café.

The 9:00 a.m.. Communion service was reviewed in the light of the future need to move to a service pattern within the Team's means – and with the likelihood of only two full-time, stipendiary clergy.

Approval given to the appointment of a Disclosure and Barring Scheme (DBS) Recruiter and Deputy for Holy Trinity.

Agreement reached that in future our Tithe payments be based on our projected, voluntary and unrestricted income and paid in the year in which they are set.

The Churchwardens' proposals for the implementation of the required Workplace Pension Scheme for Holy Trinity's eligible staff were accepted.

Members gave approval to the appointment of a PCC member as the new Referrer Relationship Manager for the Ashby Foodbank.

April:

24th April: Annual Parochial Church Meeting held. PCC members and Church Officers appointed.

May:

Following Phyl Hambleton's retirement from her 24 years of Church Hall Management, members were informed that Phyl's duties would in future be shared between several people. Discussion held regarding the changes outlined in a document – 'The Ashby & Breedon Team Ministry, Recommended Service Pattern', with a 6 month trial period due to commence on 25th September 2016.

Proposals for the purchase and installation (at no cost to the church accounts) of a small screen projector, a portable projector and a TV monitor at the back of church were approved. Members agreed that our support for Kathryn Delderfield, (previously of AYFC, now working for the growing Gateway church, Caerphilly) should continue.

In order for the many years of service by Ralph and Sylvie (as coordinators of the 'Midlands Trip') to be continued by another teacher from the Mary Ward School in Mainz, PCC members gave their approval to establishing a Memorandum of Understanding, enabling Holy Trinity to facilitate the Mary Ward School placing young people in Christian homes in Ashby for a week long visit.

July:

Members discussed the urgent need for – and means of recruiting – helpers for God Rocks Café, the Refreshment rotas and with administering Communion.

Harvest Festival Lunch date set for 9th October, in line with Kathy Hart's licensing as Pastoral Assistant on 8th October at Leicester Cathedral.

Approval given to Rev'd Adele's plans for taking the 'Girls with Swords' to Calke Park on July 10th.

September:

Arrangements made for the first meeting of the team of volunteers coordinating the Christmas Tree Festival; the meeting to take place in October.

The PCC considered options for the improvement in safety for people with mobility problems accessing church.

With the pending retirement of Rev'd John Dawson from Worthington, much consideration was given to making the transition to the Trial Service Pattern, throughout the Team's churches, as smooth as possible.

Approval given to the appointment of an Administrator of the scheme enabling the young people from The Mary Ward School to be welcomed into Christian homes in the autumn, 2017.

Information given regarding the launch of CAP Release Groups at Holy Trinity in the New Year, with a launch day on 4th December and for a manager to receive training in October.

November:

30th October. A 'Hope and Remembrance' service was again held, in conjunction with 'Hospice Hope'.

Members informed that pew sheets are being emailed via ChurchInsight on Saturday mornings.

Diocesan approval to be reapplied for, regarding Roof Repairs, at the earliest opportunity.

December:

No meeting.

2nd and 3rd December: Christmas Tree Festival held

4th December: Christingle Service with Smisby Day Nursery

5th December: Advent Carol Service

8th December: Contemporary Carol Service

10th December: CAP Carol Service

24th December: Christmas Eve Nativity Service

Local community welcomed as Christmas activities were held at Holy Trinity, including Carol Services for Ashby C of E, Ashby Hill Top, Willesley and Woodcote schools.

Jean J Harrison (PCC Secretary)

GOD ROCKS CAFÉ

God Rocks Café continues to serve as Holy Trinity's **Junior Church** meeting in the Church Hall (on the 1st, 3rd & 4th Sundays) at the same time as our 10:30 a.m. morning service. It caters for school aged children from 5-14 years with a mixture of activities which range from games, worship, prayer, bible teaching and group work with activity sheets. It aims to be very much a part of the church family, joining the congregation on the 2nd Sunday for the Family Service as well as on the 5th Sunday and during school holiday periods.

Both the 5-8 year olds and the 8-11 year olds groups use the Scripture Union teaching programme, which enables easy preparation for the leaders. These two groups meet together for the first 30 minutes when the theme of the week is introduced, followed by bible teaching, worship and games played. After a short break for refreshments the two groups then meet separately in order to do some group work and complete their age related activity sheets

For the vast majority of this year we have been down to two teams due to the problem I have had with my vocal chords and am pleased that the leadership groups have functioned well. However, once again, we find ourselves in a difficult position and one in which we have to consider child safety issues. Prayers and appeals have gone out to recruit some new leaders and helpers and some have stepped forward to become helpers which is extremely encouraging. However, we do need at least one new leader to enable us to continue to run God Rocks Café for the 3 Sundays a month that we currently offer.

Phil Taber continues to head up the 11-14 year olds group which meets on the same Sundays as the younger groups. The bible study and teaching done in this group is aimed at helping these youngsters grow in their relationship with Jesus and apply their faith in their everyday situations. This group is also in need of additional leaders to help Phil on a weekly basis as well as standing in for him when he's serving with Flame International.

God Rocks Café ministers to an average of 30+ children and young people each Sunday. The **vision** that drives the leaders is to see each one come to a living faith in Jesus that is lived out on a daily basis and which can impact their families and friends.

I will have been coordinating the rota and leading sessions for GRC for the last 4 years and will be standing down from these roles at the end of the Summer Term 2017. Please continue to pray for the work of GRC, especially that we may be encouraged by more leaders and helpers to enable our teams to be strengthened.

For more information contact Stella Brook: 07793 750727 brookstella@gmail.com

TRINITY FELLOWSHIP

The aim of the group is to offer its members a practical Christian faith and to draw them into the life and fellowship of the Church.

Trinity Fellowship meets on the last Tuesday of the month in church at 8:00 p.m. unless it falls on our evening out or when we attend the Lady Day Service. Last year Margaret Weston hosted two meetings at her home. We do not meet in August. Our meetings start with a time of worship led by a member of the group. The year started with our AGM in January and in February we joined in the Ashby and Breedon Team Talks.

Bob and Janet Onions gave us a talk on Pembrokeshire in April and in May a pleasant evening of fellowship was spent at Margaret's home. June saw us once again enjoying a meal together with friends at the New Inn in Woodville. Fish and Chips were the order of the day in July, enjoyed at the back of church. Ann and Richard Parker shared their enjoyment of canal holidays with us in September and in October Kathy Hart came to tell us of her journey to becoming a Pastoral Assistant and about her work at Leicester Cathedral. November saw us having a quiz organised by Jean Harrison. The speaker at the Advent Carol Service was the Rev'd Mary Gregory and we were joined once again by our friends from Newlands House. The collection on that evening goes to Newlands House.

During the year we have attended the Mothers' Union Lady day service and the Women's World Day of prayer and enjoyed an afternoon tea hosted by the Mothers' Union.

We sponsored a tree during the Christmas Tree Festival. The theme being Advent and the tree was decorated in Advent colours.

Trinity Fellowship is open to all and we would welcome new members. Lifts can be arranged there and back if required. So do please contact us if you would be interested in joining us on the numbers below or just come along one Tuesday. Details of our meetings will be in the Parish Magazine each month.

Margaret Weston. Tel 01530 413927
Janet Onions. Tel 01530 454153

Janet Onions (Secretary)

~~~~~

## CoT – COFFEE ON THURSDAYS

Coffee on Thursdays continues to provide an opportunity for anyone to sit for a while over a drink of their choice and enjoy some company. Conversation swings between the sublime and serious to the frivolous and flippant and anything in between. We have built up a good rapport with the staff at Wetherspoons who are most welcoming to us and everyone who joins us between 10:30 a.m. and 12 noon on Thursdays. Some people drop in regularly and stay, while others join us for a quick chat en route to or from another engagement.

*Jackie Ellett and Kathy Hart*

## REFRESH

Through Refresh, we aim at Holy Trinity Church to keep in touch with those of our congregation and friends who only manage to come to church occasionally.

Refresh takes a leading role in three services each year;

**Mothering Sunday.** We provide plants for all the ladies in church and also encourage members of the congregation to take plants out to family and friends. There is a gift card with each plant that gives our good wishes from Holy Trinity. The younger members of the congregation usually help us with distribution.

**Harvest Festival.** We encourage the congregation to bring family and friends to this familiar service where we provide a glass of wine/juice and nibbles at the end. We also encourage the congregation to bring harvest gifts to which we add a gift card. We then ask people to distribute their own gift after the service to anyone who would appreciate it.

**Christmas Carol Service.** Again we encourage the congregation to bring family and friends along to this service. Drinks and mince pies are served at the end.

'We' are the Church and together we want to take the love of Holy Trinity out into our community.

*Diana Saunders*  
Churchwarden

~~~~~

TRINITY LINK PEOPLE (TLP)

At Holy Trinity we have a group of TLP who work to support the many groups who are linked with our church. They are there to support their group in any way they can - offering a trusted confidential ear, if needed, or a word of encouragement or advice.

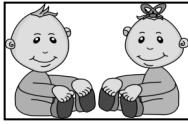
A TLP will help a group sort out minor problems if that is helpful and be there to help the group celebrate all that is going on. If a group needed financial help, for example, their TLP would take their issue to the PCC. Through regular contact, by way of a phone call or a quick word in church, TLPs aim to build up a relationship with their groups and will encourage their groups to write the occasional short report in the church magazine and to write a brief yearly report for the Church Annual Report.

TLPs will never want to intrude on a group - but simply wish to be there to support their group as and when they are needed.

A list of groups and their TLPs is shown on the next page.

Diana Saunders

Group Name	Group Contact(s)	TLP	Group Name	Group Contact(s)	TLP
After School Church	Kathy Hart	Tim Phillips	HTF Pastorate	Stephen & Stella Brook	Glenis Garner
Alpha	Katie Johnson	Tim Phillips	Let's Create - DEN	Lisa Noon	Tim Phillips
AMG (Ashby Men's Group)	Tony Bull	Bob Onions	Lyndhurst Lodge	Glenis Garner	Glenis Garner
Ashby C of E Primary School Governors	Stella Brook	Tim Phillips	Men's Bible Study	Tim Phillips	Steve Clowes
Ashby Foodbank Board	Tim Phillips	Tim Phillips	MOP (Mums of Purpose)	Sandy Marcus-Smith	Glenis Garner
Ashby Foodbank Volunteers	Noreen Mewies	Lyn Thomas	Mothers' Union	Noreen Mewies	Carole Timms
BOF (Boys on Fire)	Tim Phillips	Tim Phillips	Parochial Church Council (PCC)	Tim Phillips	Jean J. Harrison
CAP Board	Lyn Thomas	Tim Phillips	PCC Building Sub-Group	Carole Timms	Tim Phillips
CAP Fundraising Group	Noreen Mewies	Diana Saunders	PCC Standing Committee	Diana Saunders	Tim Phillips
CAP Debt Help	Mick Redfern	Tim Phillips	Pastimes & Tea (PAT)	Kathy Hart	Tim Phillips
CAP Job Club	Steve Clowes	Steve Clowes	Pastoral Team	Kathy Hart	Tim Phillips
CAP Money Course	Geoff Bull	Bob Onions	Refresh	Diana Saunders	Glenis Garner
CAP Prayers	Alison Hayes	Tim Phillips	PTVA (Pastoral Team Support Associates)	Marion Richman	Kathy Hart
CAP Release Groups	Lynda Flower	Tim Phillips	Preachers & Leaders of Services	Tim Phillips	Tim Phillips
CAP Support Team	Mick Redfern	Tim Phillips	Refresh	Diana Saunders	Glenis Garner
Coffee on Thursdays (COT)	Jackie Ellett & Kathy Hart	Tim Phillips	Refreshments after Church	Wilma Mulgrew	Jean Harrison
Courier Communion	Dorothy Clapham	Lyn Thomas	SMS (KS4) - Sunday Mornings, Sometimes	Becca Benfield	Tim Phillips
Crèche: JAM Club	Gemma Barber & Rachel Bull	Jean Harrison	Soul Café	Sandy Marcus-Smith	Tim Phillips
Deanery Synod	Iris Holt	Iris Holt	Soul Man	Paul Marcus-Smith & Carl Benfield	Tim Phillips
Emmaus	Adele Adshead	Tim Phillips	Sound Team	Tony Bull	Tim Phillips
Flowers in Church	Carole Timms	Carole Timms	Street Pastors	Vanessa Bayliss	Iris Holt
Girls with Swords	Adele Adshead	Tim Phillips	Tiny Tots	Janet Onions	Glenis Garner
Go Deeper Bible Study	Jean Holt & Marion Richman	Jean Harrison	TLC (Tuesday Ladies Church)	Lee Pinnegar & Elizabeth Rudin	Tim Phillips
God Rocks Cafe (3 teams)	Stella Brook	Tim Phillips	Trinity fellowship	Margaret Weston	Iris Holt
GRC for KS3	Paul Harris & Phil Taber	Tim Phillips	Trinity Walkers	Rosemary Whyatt	Bob Onions
HTC (Holy Trinity Clergy)	Tim Phillips	Tim Phillips	Worship Group	Ian Harris	Steve Clowes



TINY TOTS

'From the lips of children and infants you have ordained praise'

Tiny Tots meets every Monday during the school term at 2:00 p.m. in Holy Trinity Church. We welcome children from birth to school age along with their parents, grand parents or carers.

We begin with a time of praising God marching and singing with flags around the church. We then give thanks for special occasions in our lives by lighting candles and singing 'Thank you Jesus' before we blow them out. Then we talk to God with the help of our 'prayer bears'. We say thank you to Jesus for all the good things He gives us like holidays, parties, visits to the zoo, new baby brothers or sisters etc. We also ask for His help for ourselves and others and then end with a big Amen.

The format at Tiny Tots has been kept the same for a few years as we feel the children feel safe and at home with this. 'Wiggle Wiggle' continues to be very popular. We always have a story from the Bible. A song follows this, usually using a CD but sometimes Lorna plays the piano and the children love to watch her playing.

After our final prayer 'Jesus friend of little children' we go and do our craft and colouring and have a well earned drink and biscuit. There is an area for the children to play and for mums and carers to have a chat and get to know each other and us better.

The children made cards for Mothering Sunday and thanks go to Leah Stuart for coming along to help us.

Once again the children had a lovely surprise at Easter time, through the kindness of Mrs Sylvia Varnham and some of her friends who knitted them an Easter Chick each and donated some money to buy the eggs to go in them.

We collected biscuits to take to one of the care homes at Harvest Time. This year we took some to Ashby Court in a box decorated by the children.

In December we once again joined Smisby Day Nursery at their annual Christingle Service in church and took part in some of the singing, it was a lovely occasion and some of the Tiny Tots team provided refreshments afterwards.

The children also decorated stars to go on the Tiny Tots Christmas Tree at the Christmas Tree Festival.

Thanks go to all the team for giving their time to this very special, fun and rewarding ministry when we share Jesus and His great love for us with the little ones and their families. Thanks also go to Philip Craner for all his help in setting up.

We would welcome new Team Members. Some of our team members have had various health issues over the year but thankfully are now recovering or have recovered. We have been thankful that Margaret Weston, who was on the original team for many years, came back to join us. We are also grateful to Jane Allsop, Joshua Benfield, Stephen Hunt and Connor Hunt for their help during the year. God always provides.

If you would like more information please do ring me on 01530 454153

Janet Onions on behalf of the team:- Barbara Bingley, Glenis Garner, Richard Parker, Lorna Shattock, Chris Sturgess, Jennifer Swainston, Sharon Ward & Margaret Weston.

MUSICAL WORSHIP

Review

The focus of our musically-worshipping community over the past twelve months has been on deepening our relationships with God and refocusing on Him at the heart of everything we do. We see this as an active and ongoing commitment; to live every part of our lives by grace to His glory.

We have been encouraged to see the growth in numbers and fellowship of the musical worship group during 2016. We have welcomed new musicians and found ways to remain in community with those who can't always join us in person. We have invited our teenagers with musical interests to join us and would love to see a new generation of worship leaders raised up to God's glory.

Roy Sansom stepped down from regularly playing the organ during 2016 after many years of faithful worship with us. Diana, Steve, Lorna and Adele continue to bless us by playing the organ or piano and we thank them for their willingness to lead musical worship.

At Christmas, Adele formed a singing group which brought a new and distinctive voice to our Christmas celebrations. It was lovely to see a wide range of people come together to sing the season's story.

Sandy and I continued to lead alternate 10:30 a.m. Sunday services and the move to an 8:30 a.m. communion has allowed us a little more time to set up and ensure everything is running smoothly.

The year ahead

All of our worship and musical response to God's glory and love is borne from a desire to glorify Him. The phrase we most commonly use amongst ourselves to express this is our desire to be "passionate and authentic" worshippers. That will remain.

Community: First and foremost, we are committed to being a community of worshippers. Musical worship is one part of that expression but not the most important. In The Westminster Shorter Catechism we read that: "Man's chief end is to glorify God, and to enjoy him forever." And in Ephesians 1 Paul writes: "we praise God for the glorious grace he has poured out on us who belong to his dear Son." This is our purpose and our goal; to

live worshipful lives by the grace of God and the good gifts of the Holy Spirit. We are currently running the Worship Central Course to refocus our attention on worship in every aspect of our lives and are delighted to welcome all who have a passion for praising God.

Music: We will continue to seek the gift of worship; to express the joy and goodness of God and His creation. We value substance over style in our praise and always try to select music that appropriately reflects the readings and themes of our services. We want our worship to be a place of freedom, lost in His presence and praise. Please pray for wisdom, creativity and passion for those who lead our preaching, liturgy and worship and for God to raise up new Worship Leaders to join our team.

Sound: Tony has looked after our sound team for several years but is now stepping down from that role although he will remain involved on the rota. Please pray for a new Sound Team Leader to take the audio and visual work forward in church. We would love to boost the team of faithful and diligent sound engineers that we have. Please pray for Tony, Steve, Richard and Kaf as they work on Wednesdays and Sundays to deliver the words and sound well. Please pray that God will move others to join their team and please feel free to thank them regularly!

Collaboration: We have a vision of closer collaboration with those people leading services and with other worshippers across the Benefice. We would love to see Fourth Sundays continue to flourish as a creative space to encounter God and would love to work with other churches. Please pray that God will open doors and inspire us to new and authentic ways of worshipping Him.

Not Sundays: We have long considered that a musical response to worship should not just be confined to Sunday mornings. We have started to serve more small groups and "not Sunday" events but would love to be invited to do more. Please pray for opportunities for us to minister to our brothers and sisters in humble and creative ways.

Grace & peace,

Ian Harris

N W LEICESTERSHIRE DEANERY SYNOD

Revd. Tim Phillips, Iris Holt, Carole Timms and Frank Bedford are Holy Trinity's current representatives. Revd. Vivien Elphick is our current Area Dean.

2nd February 2016 at Measham Church Hall

Sally Hayden. Generous Giving Officer. Sally joined the Diocese last January. Members were asked to think about how we might look at giving within our churches; what sort of support and what resources are on offer. We should remember the offertory response: "all things come from you and of your own do we give you". Some simple practices: Do we thank people who give to church but do not attend? How often do we invite people to give?

If someone is new to church, they may not know how to give. or feel if they do not give they don't belong. If they see regular church goers not putting anything in the plate, they may feel uncomfortable about putting anything in the plate themselves because it has not been explained to them that some people give by standing order. Some churches have tokens for people to put in the plate who give by standing order. When we give to church we are entering a relationship, you are giving part of yourself.

Sally said the Generous Giving Team is there to support. If you want to change the culture of your church's giving, do ask for help. It is part of good practice.

Parish Giving Scheme, A Gift for Your Parish – Launched in Spring 2016. The system encourages givers to give by Direct Debit. Holy Trinity has decided not to join the scheme at present.

Diocesan Synod Meeting held 28th November. One of the main points was with regard to Safeguarding. A major training programme was to be rolled out across the Diocese in 2016. All those who hold the bishop's licence (readers, retired clergy etc.) are required to have safeguarding training.

Deanery weekend 2017: The Standing Committee was beginning to consider a follow up to the Adrian and Bridget Plass weekend that was held at Measham in 2014.

St Helen's Heritage Project. St Helen's had received a £603,000 Heritage Lottery grant.

St Helen's churchyard. The Town Council, responsible for the churchyard, had been given £20,000 by NWLDC to undertake improvements.

11th May 2016 at St John the Baptist, Hugglescote

Queen's 90th Birthday. Most churches would be organising events to celebrate the Queen's 90th birthday in June.

Rev'd Mary Gregory had been appointed as Mission Partnership Convenor for the Ashby and Breedon Team. Mary reported that S. Helen's had now appointed a Heritage Officer who was working at Moira Furnace and would start working in July.

Rev'd Liz Angels was successful in gaining the Rector's post at Whitwick, Swannington and Thringstone and would be inducted on 15th June.

Parish gift process for 2017 offers: Parishes would be asked to submit offers as last year and forms would be sent out shortly.

Deanery mapping process: Rev'd Tim Phillips had kindly put the information that he had been given by the churches about postcodes on a map. Canon Elphick reminded synod of the purpose of the mapping process:

- A Christian presence in every community
- Mads Morgan came out to talk to the Deanery Standing Committee about the possibility of advertising for an NSM. One of the things they said we need to do was to identify where we have people already.

National Celebration of 150 years of Reader Ministry: Celebration event to be held at De Montfort Hall 16th July. Canon Elphick requested that a list of readers in the deanery is compiled as there isn't one at the moment. Rev'd Tim Phillips volunteered to compile a database.

Arrival of Bishop Martyn in the diocese: Bishop Martyn's welcome service at the cathedral was to be on Saturday 14th May. The bishop would be visiting this deanery between 26th and 28th September.

10th November 2016 at Swebstone Church Hall.

Bishop Martyn's visit to the deanery went very well; Canon Elphick thanked everyone for their questions. The bishop met clergy in their home; he also met up with Retired Clergy, Readers, Pastoral Assistants and Evangelists.

General Synod Report: Shayne Ardron talked us through the last General Synod Report. Shayne also gave us a synopsis of what General Synod is about.

Poverty Commission: Canon Alison Adams (Acting Dean) gave a talk on the Poverty Commission. Canon Adams brought us copies of Bishop Tim's booklet **"How do you get by?"** She encouraged us to let her know what she can do to help. Canon Adams questioned how we are connected with the local statutory authorities and are we round their table or not? Canon Adams stated that she was not sure where N. W. Leicestershire Council is with poverty as this is not a council that she talks to directly. In Ashby there is the ecumenical partnership working in that kind of way. Civic authorities are also doing their own thinking and if we could join in that it would be better. A list of the things that are done in our churches to help with poverty were read out to give Canon Adams a better understanding of what we do in our deanery.

Deanery mapping exercise: Canon Elphick encouraged PCCs to work on the mapping process and feed back at the February's Synod.

Contractors Database: Arthur Granger explained that he was having problems getting an electrician to change the high level light bulbs in church, and to do small maintenance jobs like changing alarm batteries etc. Arthur wanted to know if other churches are having the same problems. It was requested that anyone with contact details of the following contractors to let him know: Electricians, Plumbers, Portable Appliance Testers, PA system, Architects or even ones to avoid. Small builders could be included too but may have to be approved by an Architect. His email address is: btec1224@yahoo.co.uk

Responding to disasters-Prepared Citizens: Canon Elphick read out a letter from the Leicester, Leicestershire and Rutland Resilience Forum stating that there is a desire to have local Prepared Citizens in the event of flood, snow gales, power cuts etc. Canon Elphick is asking us to let her know if we have anyone who would be willing to be a Prepared Citizen to let her know.

Light House Churches: Canon Elphick also asked if any church would like to be a Light House Church. This is an initiative of the Samaritans Purse. Where disasters strike Samaritans Purse links to the local Resilience Forum and then partners with a local church whose facilities and congregation are able to host teams of volunteers and staff, which come from across the country, to assist and support those affected and the clear-up operation. If any church was interested, please let Canon Elphick know.

Frank Bedford

MINISTRY TO LYNDHURST LODGE RESIDENTIAL HOME FOR THE ELDERLY

A simple service is held at Lyndhurst Lodge on the second Wednesday of the month at 11:00 a.m. The service takes place in the lounge and the residents are always pleased to see us. The team consists of Chris Sturgess, Sharon Ward, Ann Parker, Billie Maybury and myself.

The service lasts about 30 minutes and includes well known hymns, a bible reading, a short talk and prayers.

We also spend time chatting with the residents both before and after the service, and visit any residents who are bedridden and have requested a visit.

If you would like to join us in this ministry please let me know. You will always be very welcome.

Glenis Garner

~~~~~

## **MINISTRY TO LOUDOUN HOUSE RESIDENTIAL HOME**

It is with sadness that I write this report just as Loudoun House is closing. December was our last service. This came as a shock to myself and the team, but we thank God that we have had the privilege to minister to so many of the residents over the years.

Our services started when Elsie Smith, a reader at Holy Trinity moved in as a resident.

We hope and pray that over the years we have helped to bring the love, hope and healing that Jesus offers to these very special folk.

Thanks go to all who have ministered over the years in different ways: reading, giving talks, praying, handing out service sheets, playing the keyboard and working the laptop.

The residents have also received communion from time to time. Thanks go to the ministers from Trinity and S. Helen's who gave their time to do this.

The staff and management at Loudoun have always been very welcoming and we pray for them and the residents in their new work place and homes.

Thank you Lord that wherever they are you will 'Abide with Them'.

*Janet Onions, Jennifer Swainston, Sharon Ward, Lorna Shattock and Janey Allsop.*

## **ASHBY FOODBANK**

Ashby foodbank is now 3½ years into its partnership with Trussell Trust. We continue to pay £30 per month for support from our Area Manager, Susie Brook, and the staff at the Salisbury headquarters. Trussell Trust continues to provide training for the Management Board, volunteers, and referring agencies as required.

The foodbank is open on Tuesday morning from 9:30 until 11:30 a.m. and on Friday from 2:30 until 4:30 p.m. The distribution centre based in S. Stephen's Church, Woodville is open on Thursday morning from 09:30 – 11:30 a.m.

Information about the foodbank can be found on the website:

**[www.ashby.foodbank.org.uk](http://www.ashby.foodbank.org.uk)**

We continue to work within our expanded area; working with a small number of referral agencies in Burton-on-Trent and Derby. These include Trent & Dove Housing Association and One Recovery Addiction Centre in Burton and Austin Children's Centre and Sinfin Health Centre in Derby all of which now hold Emergency Boxes, and we continue to maintain our link with Burton Soup Kitchen.

The foodbank is run by the community for the community, and our team of volunteers has continued to grow during 2016. For each session we are required to have five to seven volunteers, this number has easily been met during 2016. Every client is referred by a frontline professional such as a social worker or health visitor, who is best placed in the community to assess need.

When someone collects an emergency food parcel they are signposted to external support/advice for ongoing help reducing the need for a second foodbank referral. Foodbanks are an emergency food service and, to prevent dependency, clients are entitled to up to three consecutive vouchers at which point there will be follow-up with the agency to ensure the client is receiving on-going help. In a small number of instances special dispensation may be given to help someone over the 3-voucher point. The majority of people attending Ashby foodbank only come once.

All data is recorded on the confidential Trussell Trust Cloud Data System by Nikki Eccersley, our Distribution Manager.

Each food package is made up of tinned or dried food and UHT milk, enough to feed each family member with well-balanced meals for three days, (ten meals per family member) in addition other goods such as toilet rolls, toothpaste, soap and other essentials are included if they are available. Baby milk and food are bought in when required, or if a special type is needed.

The main reasons for referral are benefit changes and delays, low income, debt, domestic violence, sickness and unemployment. We have seen a rise in single parent families and a change in child tax credits which may have accounted for some of this.

Jean M Harrison remains our Referrer Relationship Manager and she is in regular contact with the agencies. The system works well and we now have around 100 agencies holding vouchers.

.

An agencies lunch was held following the foodbank session on 12<sup>th</sup> April 2016. This was well attended and guests included the High Sheriff of Leicester and his wife. The speaker was Geoff Bull talking about CAP Money Course.

From April to September 2016 Ashby foodbank processed 225 vouchers compared to 128 in the same period in 2015 and this accounted for 615 people against 362 in 2015.

In the month prior to Christmas 2016 Davidson Homes, Infotec Ltd, Ashfield House, Teleperformance and other businesses held collections among their staff and in each case made a very large donation to our stock, for which we thank them.

Total stock donated in 2016 was around 12,990 kg; all donations large or small are welcome and valued. As fast as food comes in it is also going out as we saw a massive increase in the number of people seeking help in the few weeks leading up to Christmas. Total stock out was around 14,491 kg The next stock take will take place on 30<sup>th</sup> January 2017.

We share the in-store permanent collection box and National Collections at Tesco with Coalville foodbank. This works well for us both and in 2016 Ashby collected on Thursday 1<sup>st</sup> December 9:00 a.m. – 5:00 p.m. and Saturday 3<sup>rd</sup> December 1:00 p.m. – 5:00 p.m. M-EC Istock provided personnel for the in-store collections, leaving foodbank volunteers free to weigh-in and sort goods. The December 2016 collection totalled 1,709.6 kg of food and toiletries, a welcome addition to our stock.

The warehouse continues to be managed by Wendy Fielding. In 2016 the outside store was fitted with shelving and a power supply. The lighting is much needed during the winter months and power sockets for the scales make weighing-in much easier and convenient. A matching T card system mirroring the store layout is on the wall of the picking room. The position, contents and weight of every box is accounted for making stock rotation between the outside store and inside picking room very easy. The food stock has remained fairly constant during the year at a manageable 3,000 kg.

On 19th July 2016 Susannah Brook, East Midlands Area Manager for Trussell Trust, carried out our Annual Quality Assurance Review. Once again we achieved a very high standard with only minor details to follow up on and these recommendations have already been put in place.

One recommendation in the 2015 QA report was to add bread and butter to the distribution list; thanks to a grant from One Stop Stores we were able to purchase a small freezer, enabling us to hold a small quantity of frozen bread. A small amount of butter/spread is kept in the church fridge.

A clothes bank offering nearly new clothes ranging from birth to 11 years is run by Denise Taber working alongside foodbank. This offers additional support to both individuals and agencies and is increasingly being used and Denise is looking to expand this facility to meet this need.

Foodbank would like to thank all volunteers for their help and support over the past year. We have a very loyal group of regulars whom we could not manage without, while others come and go as time and energy allows. The Steering Group would like to thank everyone at Holy Trinity for their on-going support as we look forward to another successful year in 2017.

*Noreen Mewies*

## CONNECT

CONNECT is a community within Holy Trinity Church formerly known as the 'Pastorate'.

It was felt that the new name better expressed the ethos of our open fellowship which focuses on a fortnightly Thursday evening meeting in church.

Our Aim is to make 'connections', both with one another as we seek to grow and serve as disciples of Jesus Christ, and with those in the wider church and beyond who are looking for a place to belong and explore what following Jesus is all about.

As a 'mid sized' group of about 25 people we are especially geared to provide an experience of church which is more informal and relational. It is a place where friendships can grow and gifts can be discovered and developed. All have a part to play in a typical evening gathering which usually includes worship, a bible talk, small group sharing, prayer ministry, sharing news and testimonies and informal refreshment time.

Throughout the first half of 2016 we worked through the Letter to the Philippians, using speakers both from within the group as well as from the wider church family.

Our Autumn Programme was on the theme of 'Prayer' and we used the 'Prayer Course' provided by Holy Trinity Church, Brompton. It was based on video talks instead of our usual local speakers.

You will be very welcome to come along and give us a try one Thursday evening. It could be life changing!

For further details see our notice board in church or email: [stestellbrook@gmail.com](mailto:stestellbrook@gmail.com)

*Stephen brook*

~~~~~

RIDE AND STRIDE

The annual sponsored Ride and Stride took place on Saturday 10th September. Half the money raised through this event goes to Leicestershire Historic Churches Trust and the other half comes back to Holy Trinity.

This year £225 was raised by a lone cyclist from Trinity through visiting churches and chapels in Ashby and surrounding villages.

Thanks go to all who participated which includes those who sponsored and those who welcomed and registered visitors to our church.

Bob and Janet Onions.

CHRISTIAN AID

The total amount raised by the Ashby and District churches in 2016 was £10,083.56, an increase of £399.21 (4%) compared to last year. Of this total £2,695.23 was gift aided, which will result in a further £673 towards the work of Christian Aid. This total included £555 from a collection at Tesco on 5th August. Thanks go to those who gave up their time to help.

The house-to-house collections in Christian Aid Week were down from £7,305.97 to £6,948.72, a £357.25 (4%) decrease on last year. However, this still represents almost 70% of the total we raised from all activities and events.

Holy Trinity's twenty-seven house-to-house collectors, one less than in 2015, collected £1,683.63, an increase of £277.61 (20%). Well done! Once again Grace Cheriyan organized a collection at Willesley school, boosting our total by a further £50.16. Well done Grace, that means we had 28 collectors!

The quiz evening, organized by Holy Trinity and held in the Church Hall, raised £345, slightly up on 2015. All those taking part seemed to find it an enjoyable event.

The paper quiz sheets, based on road and street names in Ashby and Packington, raised a total of £204, almost double the amount in 2015. The winner, Wendy Jones of Packington, was drawn from the three entries who submitted 19 out of 20 correct answers.

The coffee mornings and lunches organized by the Baptist, Congregational and Methodist Churches raised a total of £838.68. The Methodist Church once again raised £500 through the sale of cards and crafts throughout the year. Their Lent boxes raised £68.

The concert held at Holy Trinity church featuring the Concordia choir and the Ashby Ukulele group went down very well and raised an excellent £1,077. The event was well attended, thanks to those who helped to sell tickets and to Holy Trinity for hosting it.

Holy Trinity's total contributions in 2016 amounted to £3,164.63, well up on the 2015 total of £1,975.07. Thank you to all who helped and gave their support in whatever way you did.

Christian Aid Week 2017 is 14th-20th May.

Christian Aid Week was set up 60 years ago, to support our work with refugees in Europe following the Second World War. It is the single biggest act of Christian witness in Britain and Ireland. It's a way of answering Jesus's call to help people in need, and showing the community just how much good the church is doing. Let's act again now, to help relieve suffering and build a world where everyone has a safe place to call home.

Will you be spirit filled, bold, and play your part this year?

Frank Bedford

CAP JOB CLUB

CAP Job Club meets every Thursday morning in church 9:15 a.m. until 12:15 p.m.

'I am the Lord, the God of all mankind. Is anything too hard for Me?' Jeremiah 32:27

God assured the Prophet Jeremiah that although the world about Him was in chaos, He was still in control and that, through His power, all would be restored.

The political and economic environment in which we operate today appears to reflect similar change and uncertainty, but we have been holding fast to God's promise in everything we do in His name. Soon, entering our 4th year, we have the same team of volunteers named at the end of this report, with Alan Sedgman joining us from S. Helen's Church and training at CAP Bradford as I write.

We have been faithful in prayer since our inception and God is blessing us in our loving service to the marginalised people in our local community. This past year we have seen our prayers answered in God's way. He began by sending more people to us, who live on Employment Support Allowance (ESA), than on Job Seeker's Allowance (JSA). This is in line with the Government's objectives and targets to reduce the number of people on ESA and to declare them ready for work. The reality of this policy has meant that we have stood alongside people who are too sick or incapacitated to work and yet have been transferred to JSA to seek work. We have also made an increased number of referrals to the Food Bank.

We have journeyed with people navigating their way through a system of medical interviews, referrals back and forth to Doctors and Hospitals, mandatory appeals and we have two members anxiously awaiting tribunal meetings and decisions which radically affect their lives.

What comfort we have then in knowing that God is indeed 'in control'. These people would not have coped on their own without the support our Thursday community gives. We see everyone as an individual person and spend time encouraging and confidence building. We have such a strong sense of God's presence, His compassion and His guiding hand upon us. No one has 'fallen down' and no one has 'given up'.

Alongside such care we continue to run the eight-session CAP Job Course and react by helping any active job seekers who come to us from the Job Centre. We personalise their CV, complete online Job applications and encounter the same frustrations as they do when the system times us out just as we are pressing the send button! Our latest successful applicant came to us by referral from a church member; the application was completed online and the lady returned two weeks later with a homemade cake to celebrate getting the job! Also, recently, a lady returned after 3 years to thank us for the help and advice we gave her about career change following redundancy and maternity. More than that, she now runs a training course at East Midlands Airport for which she could be our vital link with the Job Centre to get a number of members training for Level 2 Customer Care Skills!

Nothing is too hard for the Lord, the God of all mankind.

*Text by Alison Hayes on behalf of our manager Steve Clowes
and also Steve Porter, Gerri Abbott and Alan Sedgman*

CHRISTIANS AGAINST POVERTY - MIDLANDS NATIONAL FOREST FUNDRAISING & COMMUNICATION

Registered Charity 1131178

This is my last report as CAP MNF Fundraising Coordinator having stood down from this role on 31st December 2016. I would like to thank the team of Tim Phillips, Diana Saunders, Geoff Bull and Wendy Becker for their help and support over the last three years.

Please could I ask you to look at the financial statement for CAP MNF at the back of this document where you will see that in 2016 the cost of running the CAP service was £24,250.66, which is roughly £2,225.00 per calendar month.

Regular monthly giving totalled £7,096.00 or £591.00 per calendar month, leaving £1,634.00 per month to be raised by other means e.g. donations and fundraising. Please could I ask you to consider making a regular monthly contribution to ensure the continuity of this most valuable life changing work.

In addition to the information on the website members of the team have been in contact with, spoken at, and worked alongside churches, schools, civic groups and individuals to make as many people as possible aware of the work of CAP MNF and to encourage people to support the work financially.

We have again had a small but significant response to our regular giving and we are extremely grateful to the increasing number of individuals and organisations supporting the work of CAP.

The fundraising and communication group had a less busy 2016 but still managed to hold several fundraising events during the year and, at the same time, we were able to promote the work of CAP MNF Debt Help, CAP Money Course and CAP Job Clubs.

I would like, in particular, to acknowledge the continuing and regular support of the Ashby Rotary Clubs, Coalville & Ashby Lions and the schools.

Fundraising events held during the year included quizzes at The Plough and in Holy Trinity church hall, the 'Marathon with a Difference' at Jim's Tractor Run which was well supported and raised almost £1000, the sale of chocolate and Advent Calendars supplied by Mandy McIntosh, and the Gala Dinner on 8th October which raised around £1000.

Thanks go to everyone who helped to make these events possible and for the support of the church family and local community.

None of the nine grant applications made towards the end of 2015 were successful which was very disappointing, but I am sure that this will not stop further applications being made in 2017 as the work of CAP expands and new reasons to apply for funds arise.

Thank you for supporting me personally in my role of supporting the work of Christians Against Poverty – Midlands National Forest through fundraising.

Noreen Mewies



Trinity Walkers

2004-2016: 12 years of walks & friendship

We are a friendly group of all ages and new members are very welcome. The fellowship is great with all of us having the opportunity to chat with each other during the day. The walks are between 8 and 10 miles and are led by ourselves or other members of the group on the **third Saturday of each month**. We meet at the start point of the walk and where possible we share transport as car parking is often limited. The terrain is varied - mainly on field paths and farm tracks and we do like to include some hill walking - which can be challenging. We rarely cancel a walk because of the weather (unless it is unsafe to travel) but a walk will be postponed until the following month if there are less than 6 able to join us.

It is **essential** that everyone has appropriate clothing and footwear for the weather conditions. The conditions underfoot can often be very muddy or uneven so you may find a walking pole useful - handy too for clearing a path through nettles and brambles or to discourage the occasional inquisitive livestock!!

During 2016 we enjoyed 7 walks with an average of 10 walkers each month. Unfortunately some walks were postponed due to insufficient numbers. Three of our walks were fairly local starting from Ticknall and Market Bosworth. Other months we walked around Clumber Park and Rutland Water whilst other walks started from Edale and Southwell. Following our Christmas walk in December we enjoyed a relaxing lunch with homemade soup and mince pies.

Our walks end with a well-earned cuppa and home-made cake (donations for the work of Ashby Youth for Christ) before we make our way home.



For more information
see the Trinity Walkers'
notice board

in church or contact:

Mick and Rosemary Whyatt

☎ 01530 467682

✉ rosemary.whyatt@ntlworld.com

THE CHILDREN'S SOCIETY

'Whoever welcomes one of these little children in my name welcomes me' Mark 4 v 39

The Children's Society is a national charity that runs local projects, helping children and young people when they are at their most vulnerable, and have nowhere left to turn. We also campaign to change the law to protect children and young people, to stop the mistakes of the past being repeated in the future. It's only thanks to amazing supporters like you that we are able to continue our vital work. Thanks to the funds raised through your collection boxes and, we are able to invest over £1.6 million in services which directly impact children's lives; showing them that we are on their side and won't give up being there when they need us most.

One of the young children whose lives you helped change last year is Sophie

Things became very difficult for Sophie at home after her parents split, and soon after her 16th birthday she sadly ran away. Some nights she slept in a multi-story car park with a gang of teenagers who were also battling very difficult situations. Sophie soon became ill with anxiety, cold and flu, and endured horrendous conditions during the winter months.

One of the most harrowing moments for Sophie came when she met a man who invited her to stay in his flat. She had no idea that he was on bail for abusing women. Her circumstances became incredibly dangerous and she was very vulnerable to sexual abuse. Fortunately for Sophie, the police arrived at the man's flat and arrested him on suspicion of kidnapping her. She was quickly referred to The Children's Society and placed in the care of Gemma, who provided a safe place to talk and learn about the dangers of grooming.

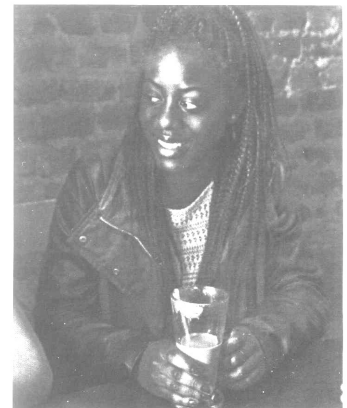
Sophie made a narrow escape, and is so grateful for the support and care she received from Gemma. She's now back at college and has reconciled with her parents. One day she wants to help vulnerable teenagers like her because she knows she can relate to them.

'Gemma has been fantastic,' Sophie says. 'I was extremely lucky to find The Children's Society at the time I did. I was just on the brink of becoming someone who no one could have saved me from.'

'On behalf of the thousands of children whose lives have been transformed by our services, I would like to extend my warmest thanks to you for being a Box Holder. Every penny you collect in your box really does make a difference, and enables us to be there for the young people who need us most.'

Matthew Reed, Chief Executive

Text above and photo is from a recent Children's Society publication



Donations from Holy Trinity in 2016:

Tithe:	£250.00
Boxes	£ 40.95
Nativity service:	<u>£311.50</u>
Total:	<u>£602.45</u>

We have only four box holders at Trinity. Can you increase this number? If you are willing to take a box please contact iris Holt on 412800. £20 could help a project worker give immediate support to a child vulnerable to exploitation.

O God, the Father of all, we commend to your ceaseless compassion all homeless children and orphans and those whose lives are overshadowed by violence or thwarted by disease or cruelty.

Awaken in us your living charity that we may not rest while children cry for bread or go uncomforted for lack of love.

N.I. Holt

THE MISSION TO SEAFARERS

Some went out on the sea in ships; they were merchants on the mighty waters.

A tree was decorated with hats at the Christmas Tree Festival in December.
A total of seventeen hats have been sent to the mission.

The following is extracted from Flying Angel news, The Magazine of The Mission to Seafarers, February 2017, Issue 19

2016 was another busy year for The Mission to Seafarers as we sought to provide a friendly welcome and practical assistance around the world. Across our network of 200 ports in 50 countries, colleagues have used your vital donations to enhance traditional chaplaincy models as well as create innovative new projects that are transforming seafarers' and their families' lives. Here, we select four locations where the Mission is making a difference.



Ben Bailey, the Mission's Project Manager, talks about some of his travels to far-flung ports - where he meets some of the Mission's wonderful Chaplains, staff and volunteers.

Mombasa, Kenya

Over the past three years, nearly 10,000 mariners have visited the seafarers' centre in Mombasa, which recently celebrated 100 years of being in Kilidini Harbour. In 2016, transitional Chaplain the Rev'd Lole Timayo retired and was replaced by the Rev'd Moses Muli. Mombasa, like many ports in the Indian Ocean, has seen seafarers affected by the threat of piracy and armed robbery. As a result, the centre has become a hub for armed guards who are working on ships to protect crews and cargo. Despite advances in modernising the port's infrastructure, this is still one of the few ports in the world where turnaround times are long enough to give crews time to go ashore and seek some Kenyan hospitality. The centre is on a large compound and offers a variety of services including free WiFi, swimming pool, library, chapel and football field. Not everywhere in Mombasa is safe for foreigners and so the Flying Angel Club provides a secure place for crews to spend a few hours. Every year, Sea Sunday is celebrated in a colourful fashion with choirs and congregations from local churches raising the roof with singing and dancing in honour of the sacrifices seafarers' make.

Manila, the Philippines

The Family Network programme in the Philippines has gone from strength to strength since being created early in May 2015. The programme, which is run in partnership with the Iglesia Filipina Independiente Church, is designed to be a locally-based befriending network. So far, four chapters have been created across the country and over 2,500 families have signed up to receive news. In addition to peer support, the network provides access to specialist services such as legal advice and a medical team, which offers seafarers reduced-cost medicals.

Last Christmas, over 50 families gathered for a day of fellowship. Christmas gifts were provided to children who would not see their seafaring loved-ones over the period and those couples who were fortunate to be together had the opportunity to share with other families and take strength from each other. Perhaps the most transformative aspect of the team's work is in Luneta Park, a traditional area known for the illegal recruitment of seafarers by rogue agencies. Here, each week, the program's coordinators run a drop-in session where they explain the work of the Mission, how to access services and how they can help seafarers' families. The Mission to Seafarers has been enthusiastically welcomed in the Philippines by seafarers' families, largely because of the good work of our teams around the world. In the Flying Angel, seafarers have an organisation they can trust and turn to for assistance.

The Mission to Seafarers in Canada

2016 saw the Mission in Canada enter a period of change as the regional director (the Rev'd Nick Parker) left his role to re-enter parish life. Canon Ed Swayze of Thunder Bay has been appointed the interim Regional Director and late last year all the stations came together to reflect on its ministry and to develop a plan for growth. Maritime chaplaincy in Canada reaches a wide spectrum of seafarers ranging from those who work on ocean-going vessels to those on smaller vessels which transit around the Great Lakes of Ontario, Superior and St Clair. Enthusiastic teams provide traditional hospitality and practical support to crews carrying all types of cargoes. Last year the Mission stepped in several times to help seafarers stranded or unpaid. In Vancouver, the team arranged for supplies to be taken to a vessel whose owner had gone bankrupt. In Hamilton, Ontario, supplies and phone cards were given to a crew whose ship was under arrest and held at anchor. And in Halifax, Nova Scotia, the team worked with the ITF to support a ship whose crew had not been paid for several months.

Yangon, Myanmar

In February of 2016, the Mission was proud to re-establish a presence in Yangon, Myanmar. The seafarers' centre is conveniently located downtown and at present is being used to build links with local maritime colleges and regulatory authorities. The project has close ties with the local Holy Trinity Cathedral, and the team provides a centre which offers free WiFi, a lounge and soft drinks. Myanmar is a significant supplier of seafarers but many cannot afford the expensive tuition to learn English. A retired English teacher from the cathedral has volunteered to provide weekly tuition to the cadets who eagerly gather at the centre to learn. So far, over 800 young people have taken classes, and many more are keen to join.

*O Trinity of love and power,
our brethren shield in danger's hour;
from rock and tempest, fire and foe,
protect them wheresoe'er they go;
thus evermore shall rise to thee
glad hymns of praise from land and sea.*

William Whiting 1860

Our support from Holy Trinity in 2016

Tithe donation:	£250
Coffee morning:	<u>£150</u>
Total:	<u>£400</u>

N. I. Holt

PLANNED GIVING

ONCE AGAIN, A BIG THANK YOU TO EVERYONE WHO HAS GIVEN SO GENEROUSLY TO HOLY TRINITY CHURCH.

The total amount given to the church within the Planned Giving scheme in 2016 was £88,161.65. The total amount on which Gift Aid tax could be claimed was £79,974.20 which includes Planned Giving, CAP and other funds such as the Church Roof, which resulted in cheques received from HM Revenue and Customs totalling £20,013.56

We were also able to claim on our small donations under the Gift Aid Small Donations Scheme (GASDS) which totalled £1,222.76 for the year.

1ST claim, Tax claimed: June: £6,632.35 GASDS: £86.13

2nd claim, Tax claimed: Sept: £4,910.48 GASDS: £309.76

3rd claim, Tax claimed: Nov: £4,127.50 GASDS: £398.41

4th claim, Tax claimed: Jan 2016 for up to 31st December 2016: £4,333.23; GASDS: £460.97

Total tax claimed for Year 2016: £20,013.56; GASDS: £1,255.27; Grand total: £21,268.83

Total non-tax efficient donations for 2016: £8,187.45

Please note that this total includes tax claimed on behalf of the CAP Fund etc.

For comparison, the total amount of donations in 2015 on which Gift Aid was reclaimed was £64,356.86 and the cheques received from HMRC totalled £16,105.72 GASDS £1,222.76 giving a grand total of £17,328.48

These figures reflect the church accounts year (1 January to 31 December) rather than the tax year (6 April to 5 April).

There are several ways in which gifts can be given within the Planned Giving Scheme, and I encourage everybody who is a regular member of the congregation to do so using one of the following methods:

- Weekly envelopes
- Monthly, quarterly or yearly standing orders
- Regular cheques put into the white envelopes, please state on the envelope the church fund you wish to donate to.

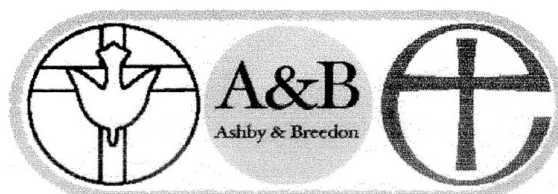
Forms for setting up standing orders, making one-off donations and making Gift Aid declarations are available at the back of the church, and can also be downloaded from the church website: www.trinityclose.net (please click on Giving).

I would also encourage everybody to use the Gift Aid envelopes at the back of the church when making donations for flowers or for any church fund, to enable the church to reclaim Gift Aid on them. It is the responsibility of individual givers to ensure that the amount of tax they pay on their income covers the tax reclaimed as Gift Aid by the charities they contribute to.

“Each of you should give what you have decided in your heart to give, not reluctantly or under compulsion, for God loves a cheerful giver. And God is able to bless you abundantly, so that in all things at all times, having all that you need, you will abound in every good work.” (2Cor 9:7-8)

Ian Rudin

HOLY TRINITY CHURCH ACCOUNTS



HOLY TRINITY
Ashby de la Zouch

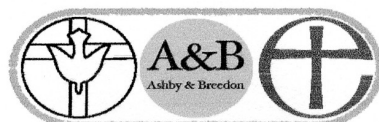
PAROCHIAL CHURCH COUNCIL OF HOLY TRINITY CHURCH ASHBY DE LA ZOUC

Registered Charity Number 1131178

Contents of the Financial Statements

For the year ended 31 December 2016

	Page
Receipts and Payments	1
Statement of Assets and Liabilities	2
Movements in Restricted and Designated Funds	3
Further Analysis of Receipts and Payment Accounts	4 - 6
Statement of Account CAP - Midlands National Forest	7
Notes to the Accounts	8 - 9
Independent Examiner's Report	10
Church Hall Accounts	11



HOLY TRINITY
Ashby de la Zouch

PAROCHIAL CHURCH COUNCIL OF HOLY TRINITY CHURCH, ASHBY DE LA ZOUC

Registered Charity Number 1131178

Financial Statements for the Year Ended 31 December 2016

Receipts and Payments Accounts

		Unrestricted General Fund	Unrestricted Designated Fund	Restricted Fund	Endowment Fund	Total 2016	Total 2015
RECEIPTS	Note	£	£	£	£	£	£
Voluntary receipts:							
Planned Giving		68,162	-	-	-	68,162	65,279
Offertories at Services		2,806	-	-	-	2,806	3,834
All other giving/voluntary receipts	5a	4,264	-	40,190	-	44,454	23,158
Gift Aid Recovered		15,987	-	2,950	-	18,937	18,976
		91,219	-	43,140	-	134,359	111,247
Activities for generating funds	5b	4,317	-	11,569	-	15,886	17,679
Income from Investments	5c	244	-	-	-	244	210
Church activities	5d	10,800	-	-	-	10,800	16,060
Other receipts	5e	1,764	-	-	-	1,764	-
TOTAL RECEIPTS		108,344	-	54,709	-	163,053	145,196
PAYMENTS							
Church activities:							
Charitable Giving	6	6,995	-	-	-	6,995	7,084
Parish Contribution		54,413	-	-	-	54,413	55,000
Church running expenses	7	41,498	318	29,173	-	70,989	67,295
Cost of generating funds	8	175	-	12,629	-	12,804	11,363
TOTAL PAYMENTS		103,081	318	41,802	-	145,201	140,742
Excess of receipts over payments		5,263	(318)	12,907	-	17,852	
Transfers between funds		(5,493)	-	5,493	-	-	
Net Movement in funds		(230)	(318)	18,400	-	17,852	4,454
Cash at bank and in hand at 1st Jan		1,138	5,575	60,491	-	67,204	62,750
Cash at bank and in hand at 31st Dec		908	5,257	78,891	-	85,056	67,204

NB. Figures for 2015 originally prepared under the Accrual system have been restated as if prepared under the Receipts and Payments convention for comparability with 2016

Statement of Assets and Liabilities at 31st December 2016

<u>Cash Funds</u>	<u>Unrestricted Funds</u>	<u>Designated Funds</u>	<u>Restricted Funds</u>	<u>Endowment Funds</u>	<u>Total 2016 (£)</u>	<u>Total 2015 (£)</u>
PCC Deposit a/c CBF	52	5,257	55,207	-	60,516	41,092
PCC Current a/c	856	-	-	-	856	916
Ashby Foodbank Current a/c	-	-	3,636	-	3,636	4,039
Ashby Foodbank Petty Cash a/c	-	-	210	-	210	-
Ashby Foodbank PayPal a/c	-	-	-	-	-	-
CAP-MNF Current a/c	-	-	7,675	-	7,675	7,205
CAP-MNF PayPal a/c	-	-	-	-	-	160
Butlers CAP PayPal a/c	-	-	-	-	-	568
Church Hall Current a/c	-	-	12,163	-	12,163	13,224
	908	5,257	78,891	-	85,056	67,204
<u>Other Monetary Assets</u>						
Income Tax recoverable	4,264	-	530	-	4,794	4,050
Hall Rental			1,728		1,728	-
<u>Grants awarded outstanding 31.12.2016</u>						
Ashby Town Council re Church Roof Repair		-	500	-	500	-
Cinnamon Trust re CAP Release Group		-	2,000	-	2,000	-
	4,264	-	4,758	-	9,022	4,050

Liabilities

Notes

- 1. The financial statements of the PCC** have been prepared in accordance with the Church Accounting Regulations 2006 using the Receipts and Payments basis. The activities of the Church Hall, the CAPMNF Debt Counselling Centre and of Ashby Foodbank have been aggregated with the PCC accounts.
- 2. Fixed Assets;** Consecrated and benefice property is not included in the accounts in accordance with s.96(2)(a) of the Charities Act 1993. The PCC has not included the Church Hall and associate land in the accounts as it is unclear to establish the ownership of the property and the valuation at the time of preparation of the 2016 Financial Statements.
- 3. Roof and Organ Repairs;** Repairs to the roof and organ of approximately £72,000 and £36,000 respectively are required but have not been included in these Financial statements as liabilities as the precise costs and possible funding is not yet known.

4. Funds

Endowment funds are funds, the capital of which must be maintained; only income arising from investment of the endowment may be used, either as restricted or unrestricted funds depending upon the purpose for which the endowment was established. No endowment funds existed at 31.12.2016.

Restricted funds represent (a) income from trusts or endowments and (b) donations or grants received or money raised for a specific purpose. The funds may only be used for the purpose specified by the donor or when raised.

Unrestricted funds are general funds which can be used for PCC ordinary purposes.

Designated funds are sums set aside out of General Funds by the PCC for specific designated purposes. They can be transferred back to unrestricted funds at any time if the PCC so decides.

The movements in the designated and restricted funds during 2016 were:

<u>Restricted Funds</u>	<u>Bal.B/fwd</u>	<u>Receipts</u>	<u>Payments</u>	<u>Transfer</u>	<u>Bal C/fwd</u>
Audio/Visual	149	2,255	2,018	-	386
Church Building	1,808	8,097		3,443	13,348
Roof	22,886	8,366	-	50	31,302
Organ Restoration	9,601	-	-	-	9,601
New Wine	211	-	-	-	211
Soul Café	320	-	250	-	70
Tiny Tots	320	-	32	-	288
CAP-Midlands National Forest	7,933	21,993	24,251	2,000	7,675
Ashby Foodbank	4,039	2,060	2,463	-	3,636
Ashby Foodbank Petty Cash	-	369	159	-	210
Church Hall	13,224	11,569	12,629	-	12,163
TOTALS	60,491	54,709	41,802	5,493	78,891

<u>Designated Funds</u>	<u>Bal.B/fwd</u>	<u>Receipts</u>	<u>Payments</u>	<u>Transfer</u>	<u>Bal C/fwd</u>
Photocopier Fund	2,548	-	-	-	2,548
Roof Fund (Bequest by Mr Hurst)	2,000	-	-	-	2,000
Outreach Work	1,027	-	318	-	709
TOTALS	5,575	-	318	-	5,257

The Balance in the Church Building Fund is reserved first for use for the Church Roof repairs, when this has been completed any monies remaining are to be used for renovation/ refurbishment of the Church building as agreed by the PCC.

The transfer of £3,443 to the Church Building Fund is the net income from the Christmas Tree Festival

The balance in the CAPMNF account is a Restricted Fund to be used solely for CAP purposes.

The transfer of £2,000 to CAPMNF as part of the Church Tithe is regarded as an internal transfer between funds.

The transfer of £50 to the Roof Fund is a donated Organist Fee.

The balance in the Foodbank account is a Restricted Fund to be used solely for Foodbank purposes.

Ashby Foodbank's stock of food has not been included as an asset as the food was donated and is to be given to referred clients, not sold.

The Balance in the Church Hall Account is deemed a Restricted Fund as it is to be used for Hall repairs and maintenance.

Further Analysis of Receipts and Payments Accounts

Note	2016	2015
5a <u>All other Giving/Voluntary Receipts</u>	£	£
Donations	3,606	4,259
Restricted Donations	2,570	2,182
Collections	789	97
Gift Day	12,010	-
Grants	1,000	-
Bequests	-	-
Alpha Group Income	57	-
Ashby Foodbank Income - Restricted inc paypal and petty cash	2,429	3,485
CAP-MNF Income -Restricted excluding £2,000 for Church Tithe treated as transfer between Internal Funds.	21,993	13,047
	<u>44,454</u>	<u>23,158</u>
5b <u>Activities for Generating Funds</u>		
Hall Income	11,569	12,934
Miscellaneous Sales	98	238
Income for Private Photocopying	489	366
Income Christmas Tree Festival/ Fayre	3,618	1,405
Income Lesley Smith Evening	-	2,736
Ride and Stride	112	88
	<u>15,886</u>	<u>17,767</u>
5c <u>Income from Investments</u>		
Interest received on CBF Deposit Fund	244	210
5d <u>Church Activities</u>		
Fees from Weddings and Funerals	8,733	13,524
Magazine sales	267	448
Church Trip	-	320
Church hire-local community use	1,800	1,768
	<u>10,800</u>	<u>16,060</u>
5e <u>Other Incoming Receipts</u>		
LDBF Refund	1,659	-
Administration work	105	-
	<u>1,764</u>	<u>-</u>
<u>Donations</u>		
From individuals	3,461	4,093
The Hollies School	40	40
Ashby C of E School		81
LENO Group	30	-
Ashbeian Musical Group	50	-
Holy Trinity Mothers Union	25	25
Trinity Fellowship	-	20
	<u>3,606</u>	<u>4,259</u>

Restricted donations

From Individuals	620	2,182
Ferrers & Ivanhoe Benevolent Fund (Roof)	250	-
Projector purchase (Audio Visual Fund)	1,200	-
Ashby Willesley School (Roof)	50	-
In memory of Betty Drabble (Church Building Fund)	150	-
Queen's 90th birthday celebration (Church Building)	300	-
	2,570	2,182

Collections

Wedding & Funeral (Unrestricted)	32	97
In memory of Betty Drabble (Church Building Fund)	462	-
Ashby C of E School (Roof Fund)	226	-
Ashby Hill Top School (Harvest)	69	-
	789	97

Grants

Ashby Educational Trust re Projector for Youth Work	750	-
Growth Fund re Remembrance at Christmas	250	-
	1,000	-

PAYMENTS**6 Missionary & Charitable Giving**

(a) Tithe, excluding £2,000 to CAPMNF	6,878	6,884
Missionary and Charitable Giving	117	200
	6,995	7,084

NB £2,000 transferred to CAPMNF is regarded as a transfer between internal funds.

Church Tithe paid 2016

LOCAL Charity		NATIONAL / INTERNATIONAL Charity	
Ashby Youth For Christ	£ 2,000	SAMS/CMS	£ 1,000
CAP Midlands National Forest	£ 2,000	Childrens' Society	£ 250
Hospice Hope	£ 500	Church Army	£ 250
Street Pastors	£ 250	CPAS	£ 250
The Haven	£ 250	CMJ	£ 250
Holiday Bible Club	£ 50	New Wine	£ 250
Sound Café Leicester	£ 250	Sea Farers	£ 250
		Tear Fund	£ 250
		Flame International	£ 250
		Gateway (K Delderfield)	£ 250
		Justus Solomon(Reserve Charity)	£ 328
Total	£ 5,300	Total	£ 3,578

Parish Contribution

NB Figure of £54,413 includes a payment of £4,413 made in January 2016 for 2015

7	<u>Church Running Expenses</u>	<u>2016</u>	<u>2015</u>
	Salaries, pension payments & HMRC (Church)	12,098	11,576
	Insurance	4,356	4,258
	Gas, Electricity Water -Church	4,256	4,781
	Upkeep of Churchyard & Security	191	419
	Repairs and Maintenance	3,261	1,190
	General Running Costs	543	1,293
	Purchases	217	527
	Sundry Items	1,132	618
	Church Organ	359	301
	Creche Expenditure	52	157
	God Rocks Café expenditure	358	614
	Alpha Course Expenditure	133	118
	Hospitality	398	912
	Church Trip	-	320
	Cards/presentations	374	469
	Expense/mileage	3,811	3,585
	Bank charges	409	448
	Wedding & Funeral Fees paid LDBF	1,987	3,717
	Deputising Minister & Organist Fees	2,934	3,952
	Magazine Production	51	25
	Ashby & Breedon Team Expenditure	-	638
	Parish office	257	207
	Church Insight (Holy Trinity Portion)	899	572
	Telephone & Internet (Holy Trinity Portion)	1,145	1,125
	Stationery	363	586
	Postage	49	34
	Photocopier	1,410	915
	Licence Fees	772	635
	Audio/Visual Expenditure (Reserved Fund)	2,019	1,093
	Soul Café (Reserved Fund)	250	80
	Tiny Tots (Reserved fund)	32	80
	Ashby Foodbank expenditure including PayPal & Petty Cash (Reserved Fund)	2,622	1,928
	CAP expenditure including PayPal (Reserved Fund).	24,251	19,670
		<u>70,989</u>	<u>66,843</u>
8	<u>Cost of Generating Funds</u>		
	Church Hall Expenditure	12,629	10,657
	Expenses Christmas Fayre	175	45
	Expenses Lesley Smith evening	-	661
		<u>12,804</u>	<u>11,363</u>

STATEMENT OF ACCOUNT CAP - Midlands National Forest at 31/12/2016

RECEIPTS

		2016	2015
Monthly Giving		£ 7,096.00	£ 6,206.00
Donations	(note 1)	£ 7,292.34	£ 2,310.52
Church Donations	(note 2)	£ 4,945.16	£ 2,728.85
Gift Aid		£ 1,544.48	£ 1,877.66
Grants		£ -	£ -
Fund Raising	(note 4)	£ 2,829.20	£ 4,191.28
CAPMNF PayPal		£ -	£ 110.00
Butler's CAP Internet Sales PayPal		£ -	£ 257.55
Refund CAP Jobclub Expenses CAP Bradford		£ 285.81	£ -
Total Receipts		£ 23,992.99	£ 17,681.86

PAYMENTS

		2016	2015
CAP Headquarter charges		£ 6,996.00	£ 6,996.00
CAP Headquarter charges for Job Club		£ 480.00	£ 440.00
CAPMNF Insight Membership Charges		£ 75.48	£ 19.68
Salaries & HMRC Payments		£ 13,908.93	£ 10,351.67
Office Manager's Expenses		£ 1,159.72	£ 1,107.52
Debt Coach Expenses		£ 388.87	£ 107.04
General Expenses		£ 477.74	£ 269.55
CAP Money Expenses and training		£ 151.36	£ 32.00
CAP Jobclub Expenses		£ 285.81	£ -
CAP Release Group Expenses		£ 26.75	£ -
Office Manager's Expenses Float		£ 300.00	£ 200.00
Debt Coach Expenses Float		£ -	£ 100.00
Fees CAPMNF PayPal a/c		£ -	£ 4.79
Butler's CAP PayPal Fees & Operating Costs		£ -	£ 41.73
Total Payments		£ 24,250.66	£ 19,669.98

Account Balance 31st December

		2016	2015
Balance b/f 1st January		£ 7,933.08	£ 9,921.20
Receipts at 31st December		£ 23,992.99	£ 17,681.86
Total Receipts at 31st December		£ 31,926.07	£ 27,603.06
Payments at 31st December		£ 24,250.66	£ 19,669.98
Balance at 31st December		£ 7,675.41	£ 7,933.08

Bank Balances at 31st December

		2016	2015
Lloyds Bank		£ 7,675.41	£ 7,204.61
CAPMNF PayPal a/c		£ -	£ 159.84
Butler's CAP PayPal a/c		£ -	£ 568.63
Total Bank Balances at 31st December		£ 7,675.41	£ 7,933.08

NOTES TO THE ACCOUNT 2016

Note 1 Donations

From Individuals	£ 6,970.00
Ashby Castle Rotary Club	£ 250.00
Woodcote School Harvest Collection	£ 72.34
	<u>£ 7,292.34</u>

Note 2 Church Donations

Ashby Baptist Church	£ 585.48
Ashby Baptist Church (Carol Service offertory plus donation).	£ 159.72
Ashby Baptist Church Donation	£ 270.00
Ashby Baptist Church. Monthly Donations	£ 859.96
New Life Church Margaret St Coalville Monthly Donations	£ 560.00
New Life Church Margaret St Coalville Donation	£ 200.00
Ashby Congregational Church	£ 110.00
Holy Trinity Church Tithe	£ 2,000.00
St Wilfrid's Catholic Church Coalville	£ 100.00
Griffydham Wesleyan Reform Church	£ 100.00
	<u>£ 4,945.16</u>

Note 3 Grants

£ -

Note 4 Fundraising

CAP quiz at the Plough	£ 95.00
CAP quiz at Trinity	£ 210.00
Lisa's Creative Workshops	£ 111.00
Butlers CAP	£ 40.00
Ashby Baptist Church Queen's birthday celebration	£ 67.90
Jim's Tractor run	£ 933.60
Noreen's sale of donated Fair2all chocolate	£ 120.00
Donations at Fair2all for chocolate supplied	£ 101.30
CAP at the Statutes	£ 25.90
CAP Gala Dinner	£ 1,051.00
CAP Cake at Trinity	£ 73.50
	<u>£ 2,829.20</u>

Ashby Foodbank Statement of Accounts as at 31st December 2016

	2016	2015
Expenditure		
Franchise	£360.00	£360.00
Salary		£773.40
Rent - Warehouse		£240.00
Rep & Ren	£553.89	£139.20
Congregational Church	£1,000.00	£200.00
Sundries	£99.98	£150.57
Petty Cash	£192.00	£41.50
Church Insight	£99.96	£22.68
Fridge	£129.98	
Travel Expenses	£27.45	
Pay Pal Expenditure		£0.88
	<u>£2,463.26</u>	<u>£1,928.23</u>
Income		
Donations	£765.61	£1,694.13
Fund Raising		£152.00
Trussel Trust	£1,090.90	£1,618.53
Gift Aid	£33.35	
Grant For Fridge	£129.99	
Petty Cash	£40.00	
Pay Pal Donation		£20.00
	<u>£2,059.85</u>	<u>£3,484.66</u>
Balances as at Dec 2016		
Balance brought forward	£4,039.03	£2,482.60
Income	£2,059.85	£3,484.66
	£6,098.88	£5,967.26
Payments	£2,463.27	£1,928.23
	<u>£3,635.61</u>	<u>£4,039.03</u>
Bank Balance as 31st Dec 2016		
Lloyds	3635.61	4039.03
Petty Cash	209.72	
	<u>3845.33</u>	<u>4039.03</u>

INDEPENDENT EXAMINER'S REPORT TO THE PCC OF HOLY TRINITY CHURCH, ASHBY DE LA ZOUCH FOR THE YEAR ENDED 31st DECEMBER 2016

I report on the accounts of the Parochial Church Council of Holy Trinity Church, Ashby de la Zouch, for the year ended 31st December 2016.

Respective responsibilities of the Trustees and Independent Examiner

The PCC are responsible for the preparation of the accounts and consider that an audit is not required for this year under section 144(2) of the Charities Act 2011 and that an independent examination under section 145(1) of the Act is needed.

It is my responsibility to

- Examine the accounts under section 145 of the 2011 Act;
- Follow the procedures laid down in the General Directions given by the Charity Commissioners section 145(5)(b) of the 2011 act; and
- State whether particular matters have come to my attention.

Basis of Independent Examiner's Statement

My examination was carried out in accordance with the General Directions given by the Charity Commission.

An examination includes a review of the accounting records kept by the PCC and a comparison of the accounts presented with those records. It also includes consideration of any unusual items or disclosures in the accounts, seeking explanations from the PCC concerning any such matters. The procedures undertaken do not provide all the evidence that would be required in an audit and consequently no opinion is given as to whether the accounts present a "true and fair view" and the report is limited to those matters set out in the statement below.

Independent Examiner's Statement

In connection with my examination no matters have come to my attention:

1. which give me reasonable cause to believe that in any material respect the requirements
 - to keep accounting records in accordance with s.130 of the Charities Act 2011 or
 - to prepare accounts which accord with the accounting records and comply with the accounting requirements of the 2011 Act have not been met; or
2. to which, in my opinion, attention should be drawn in order to enable a proper understanding of the accounts to be reached.

Signed.....

Date 24 FEB 2017

Name ALEC ERNEST WAYTE

Relevant Professional Qualification ACI B

Address 1 HOSPITAL LANE

RAVENSTONE, COALVILLE

LEICESTERSHIRE LE67 2AJ

PCC HOLY TRINITY - CHURCH HALL

Accounts for the year to 31st December 2016

RECEIPTS

	2016	2015
Playgroup	£ 6,913.00	£ 6,644.00
Badminton	£ 416.00	£ 364.00
Phoenix Academy of		
Performing Arts	£ 2,148.00	£ 4,176.00
Sunday Evening		
Fellowship	£ 510.00	£ -
Army Cadets	£ 940.00	£ 900.00
Thursday ladies	£ 352.00	£ 336.00
Miscellaneous lettings	£ 240.00	£ 315.00
Bartlett's Refund PCC	£ -	£ 80.00
Donations	£ 50.00	£ 119.00
TOTAL RECEIPTS	£ 11,569.00	£ 12,934.00

PAYMENTS

	2016	2015
Salaries	£ 6,258.22	£ 5,250.27
Gas	£ 1,244.19	£ 1,152.08
Electricity	£ 900.61	£ 787.43
Water rates	£ 181.20	£ 153.64
Insurance	£ 848.06	£ 814.69
Window Cleaning	£ 187.20	£ 180.00
ESPO	£ 984.79	£ 546.93
General Maintenance	£ 1,602.94	£ 1,235.75
Dustbin Hire	£ 325.00	£ 311.48
Purchase fridge	£ -	£ 149.99
Sundries	£ 52.00	£ -
Refund to playgroup re closure	£ -	£ 32.00
Piano tuning	£ 45.00	£ 43.00
TOTAL PAYMENTS	£ 12,629.21	£ 10,657.26

Book Balance

C/F 1st Jan	£ 13,223.54	£ 10,946.80
Receipts at 31st December	£ 11,569.00	£ 12,934.00
Subtotal	£ 24,792.54	£ 23,880.80
Less total payments	£ 12,629.21	£ 10,657.26
Balance Carried Forward	£ 12,163.33	£ 13,223.54

Bank Balance

C/F 31st Dec	£ 12,163.33	£ 13,223.54
--------------	-------------	-------------

S c lowes

 8/2/2017